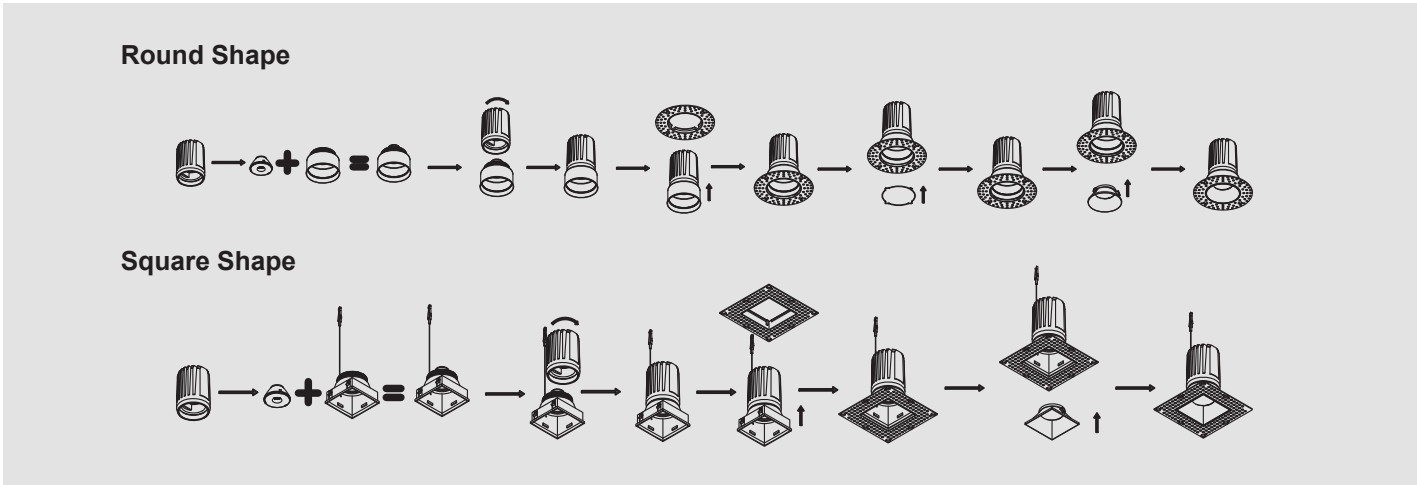


2" and 3" Recessed Downlights Trimless

FIXTURE ASSEMBLY

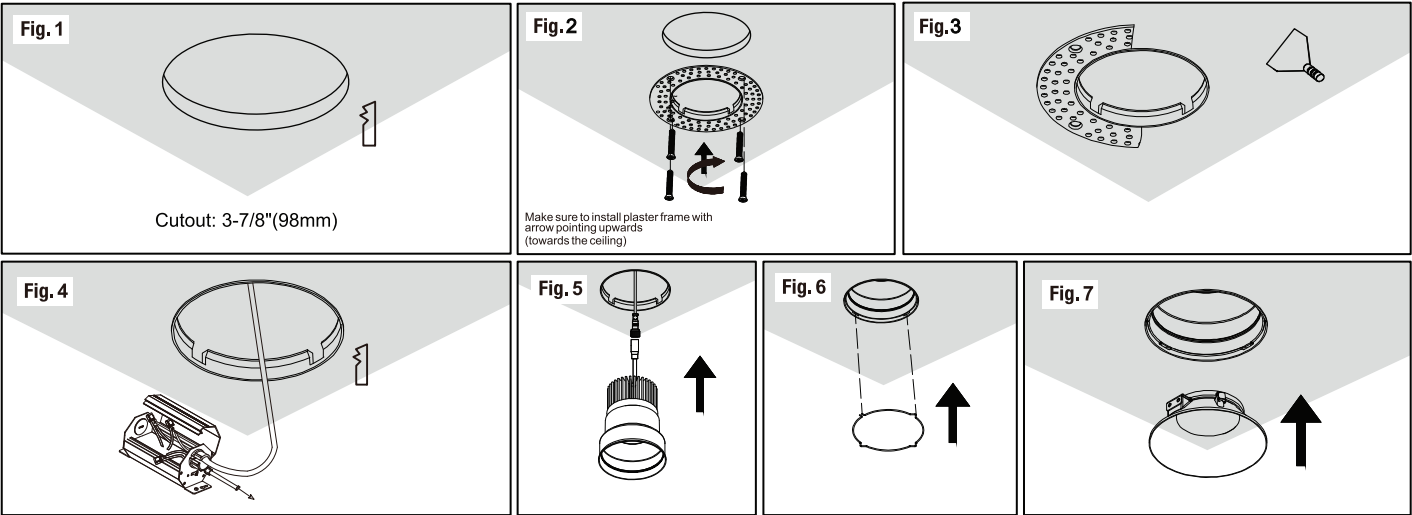


IMPORTANT: Read all instructions before installing LED down light. Retain for future reference.

SAFETY: This fixture must be wired in accordance with local electrical codes and ordinances. Carefully observe grounding procedure under installation section. All work should be done by a qualified electrician.

WARNING:

- 1.Make certain power is OFF from the electrical panel before starting installation or attempting any maintenance.
- 2.Do not mix different sizes and styles of fixtures on the same dimmer, not all fixtures will exhibit the same correlated colour temperatures at the same dimming level.
- 3.Indoor installation only.



INSTALLATION:

- 1. Turn power OFF from the electrical panel before starting installation.
- 2. Locate a suitable position to place the fixture and open a hole in accordance to the cut-hole dimensions (refer to Hole Cut Table for appropriate size). (FIG.1)
- 3. Align the inside edge of the Zero Clearance plaster frame to the drywall hole and screw in place. (FIG.2)
- 4. Plaster over the plaster frame, be careful not to fill past raised rim. (FIG.3)
- 5. Run the electrical wire from the switch (power supply) through the mounting hole-use NMD90 Romex or BX cable.
- 6. Open the hardwire box swing cover and remove the appropriate knockout(s). Insert the electrical supply cable through the knockout and secure with a cable connector (sold separately). 7. Wire box using supplied quick connect push-in terminals. Connect green ground wire of cable to green wire on box. Connect white wire of cable to white wire of box. Connect black wire of cable to black wire of box. (FIG.4)
- 8. Place all wiring and connections back in to the box and close the cover, then insert into ceiling.
- 9. Connect the fixture to the hardwire box by insertng and twisting the male/female connectors. (FIG.5)
- 10. Install the four corners of the wire spring into the four holes of the trimless, just enough to secure the trimless.(FIG.6) 11. Install the inner ring inside(FIG.7) 12. Once assembly is complete, turn on power to confirm fixture is working properly.